

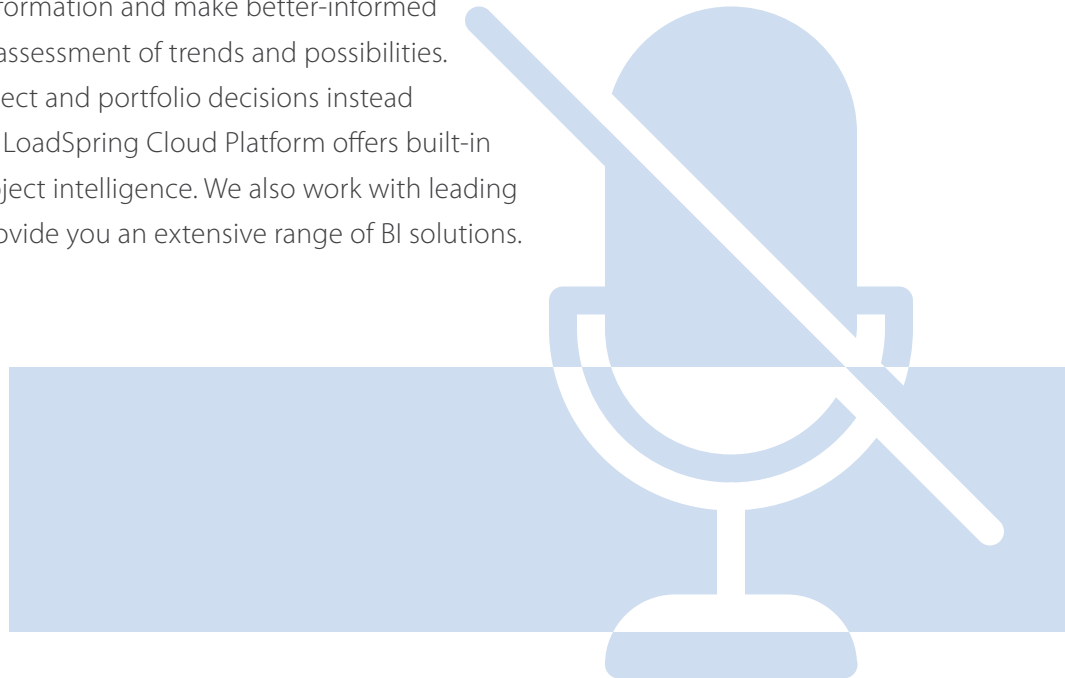


# IS YOUR BUSINESS INTELLIGENCE ON MUTE?

## Executive Summary

Hey project data, talk to me! Project management, estimating, and scheduling programs and their data can offer valuable business insights when you let them. To speak with other people in a videoconference, you might click the “mute/unmute” button. For project applications, project intelligence can provide the “unmute” function. Project intelligence (PI) is a component of business intelligence. PI enables top-down enterprise analytics for your entire project-based organization.

With increasing project sizes and data, business intelligence (BI) software tools offer smarter, more automated ways to extract more information and make better-informed decisions. They enable continuous assessment of trends and possibilities. You can immediately make the project and portfolio decisions instead of having to wait for days or weeks. LoadSpring Cloud Platform offers built-in cloud business intelligence and project intelligence. We also work with leading software and service partners to provide you an extensive range of BI solutions.



**Disclaimer Statement:** All information provided in this document is AS IS. Although we have taken great care to represent all information in a clear and accurate manner, some information is based upon market trends, forward thinking and assumptions for which we make no warranty (express or implied) as to the accuracy or completeness disclosed herein. We expect that any parties reading this document will perform their own due diligence to verify its accuracy before making any decisions based upon information provided in this document. The information contained in this document does not imply an offering of stock in LoadSpring Solutions, Inc.



# IS YOUR BUSINESS INTELLIGENCE ON MUTE?

## CONTENTS

EXECUTIVE SUMMARY	1
UDATA STORAGE FOR PROJECT INTELLIGENCE	3
DATA MINING	4
DATA ANALYTICS AND BI	5
PREDICTIVE MODELING	6
CLOUD BUSINESS INTELLIGENCE FOR CORPORATE REPORTING	7
DATA VISUALIZATION	8
PROJECT INTELLIGENCE DASHBOARDS	9
ALERTS AND NOTIFICATIONS	12
CHOOSING THE RIGHT CLOUD PI SOLUTION	11
<i>LoadSpringInsight</i>	12
NEW ENHANCED AI AND BI SOLUTIONS	13
CONCLUSION	14





## IS YOUR BUSINESS INTELLIGENCE ON MUTE?

# DATA STORAGE FOR PROJECT INTELLIGENCE

BI software needs data input to give value-added output. In some cloud BI solutions, the BI applications get their data directly from other applications like scheduling, estimating, and product management programs. Other BI applications access a shared storage location that groups together data from different sources.

Large amounts of data, including data from past projects, requires setting up a data warehouse in your IT systems/in the cloud. The data warehouse or data lake collects, converts, and makes data available from different sources (also known as “extract, transform, and load” or ETL) for software programs like BI applications.



# DATA MINING

Data mining is the process of finding patterns, connections, and exceptions in data. For cloud BI solutions, this process can be automated or semi-automated to handle large data sets with structured data (like numbers) or unstructured data (like unformatted text). The output of data mining can be analyzed—see Data analytics and BI below—to understand past and present situations, predict future events, and choose courses of action, for example, to improve project outcomes and reduce project risk.





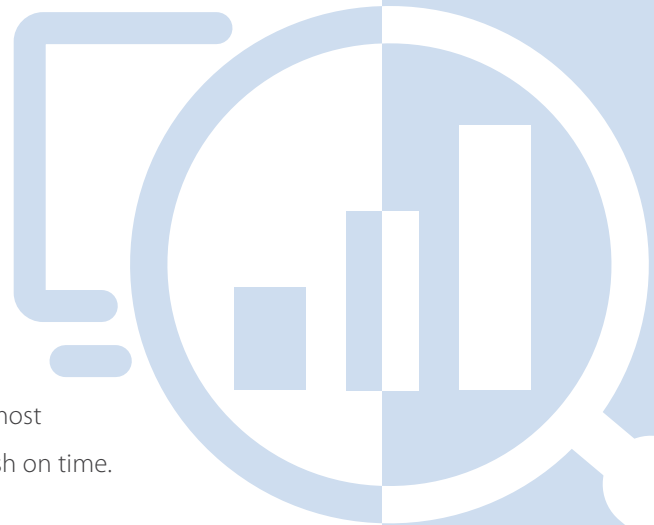
## IS YOUR BUSINESS INTELLIGENCE ON MUTE?

# DATA ANALYTICS AND BI

Do you want to know what happened in a past project? Why did it happen? What is happening now in a current project? What will likely happen in the future? And what to do about it?

Data analytics and business intelligence software can help answer these questions to deliver project intelligence visibility. There are four main types of analytics:

- 1. Descriptive analytics:** uses past and present data to uncover patterns and insights. For example, by analyzing past project estimates and actuals, you could make a base of standard estimating blocks and rules to help you estimate costs for new projects faster and more accurately, and increase ROI.
- 2. Diagnostic analytics:** tells you why something happened, like a change in regulations that increased project costs, or smarter processes with better productivity that helped projects to finish earlier.
- 3. Predictive analytics:** shows how things are likely to work out. Examples might be forecasts of market sectors that will be the most profitable or predicting if a project currently in progress will finish on time.
- 4. Prescriptive analytics:** also known as decision analytics, these analytics can evaluate possible courses of action or generate recommendations for what you should do.





## IS YOUR BUSINESS INTELLIGENCE ON MUTE?

### PREDICTIVE MODELING

You can build models with cloud BI solutions that let you see how variations in the data will lead to different outcomes. For example, you can vary the values of parameters like project budget and delivery dates, market demand for products from manufacturing projects, or changes in the weather for construction projects.

On [LoadSpring Cloud Platform](#), you can use a predictive model to predict values or outcomes from a given dataset. After using test datasets (training datasets) to refine your predictive model, you can apply it to data and projects of interest to you.

### CLOUD BUSINESS INTELLIGENCE FOR CORPORATE REPORTING

Data collection and analytics are just half of the process. The other half is making sure that the information and insights are available through user-friendly reporting for the people who can benefit the most from them. These people could be senior managers and project portfolio directors, making strategic decisions. Alternatively, they could be remote teams that need real-time BI and project intelligence to ensure that current project deliverables stay on track.

### DATA VISUALIZATION

It is often easier to grasp the significance of data when it is shown graphically instead of numerically. Bar or pie charts have a greater visual impact than rows and columns of numbers. The same is true for project intelligence. On a chart or a graph, outliers like excellent or poor project results become immediately obvious, as do overall trends. Good data visualization features are important for using business intelligence software effectively.



# PROJECT INTELLIGENCE DASHBOARDS

PI dashboards contribute to good data visualization through at-a-glance displays of data and analytics, via predefined or custom-built selections. For example:

- A construction project dashboard might include graphics for safety statistics, quality checks, budget used, and scheduling.
- A manufacturing project dashboard could highlight project phases completed, manufacturing output levels, reject rates, and productivity.
- A project portfolio dashboard could display the profitability of projects, overall portfolio return-on-investment, and any exceptional events requiring senior management attention.



# ALERTS AND NOTIFICATIONS

Instead of spending time and effort on processes and operations that already work well, it may be more productive to focus on exceptional events. As part of your BI, you can define alerts to notify you of such events. Using predictive data analytics, you can even get such alerts ahead of time, warning you of a problem likely to occur in the future, so that you can fix it before it happens.



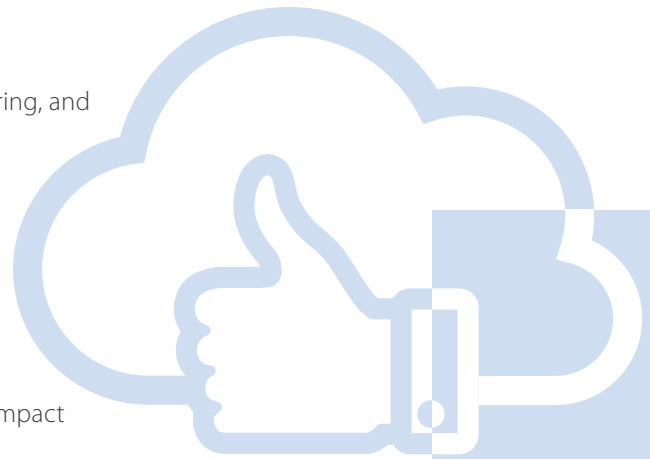


## IS YOUR BUSINESS INTELLIGENCE ON MUTE?

# CHOOSING THE RIGHT CLOUD BI SOLUTION

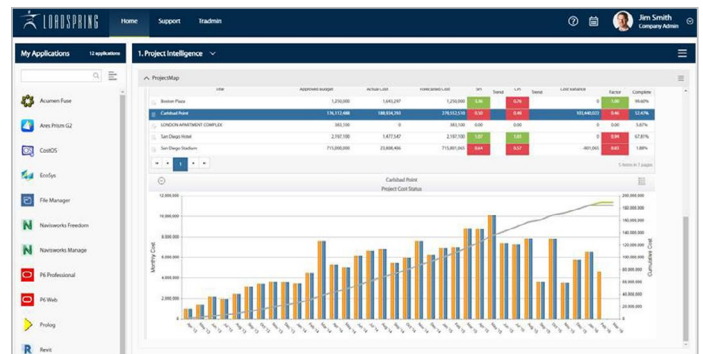
LoadSpring managed cloud services have built-in business intelligence and analytics. LoadSpring Cloud Platform can also host BI and analytics applications of your choice. LoadSpring can build your data warehouse in LoadSpring Cloud Platform, you can perform the analytics you want, and benefit rapidly and cost-effectively from the insights. Examples of BI applications already available as cloud-hosted software or managed services from LoadSpring include:

- Oracle Business Intelligence Publisher; (BIP) for managing, authoring, and delivering business intelligence reports.
- Oracle Primavera P6 Analytics; for forecasting costs, uncovering trends, identifying the causes of issues at any time during a project lifecycle, and making better portfolio decisions.
- Microsoft Power BI; for interactive data visualization, measuring impact and ROI, creating new efficiencies across your organization.
- Tableau; for big data analytics, hybrid connectivity to support both live analysis and bring data in-memory via encrypted extracts.



## LoadSpringInsight

LoadSpring Cloud Platform federates access to different applications and their data, including Oracle Primavera P6/CM/Unifier, Trimble Prolog, EcoSys, Ares Prism G2, and Deltek PPM Suite. LoadSpringInsight lets you access the data of interest to you from the apps you are running on LoadSpring Cloud Platform and view all the data in a single, intelligent dashboard. Look to LoadSpringInsight to see the class project management stats and scores all in the same dashboard.





**IS YOUR BUSINESS INTELLIGENCE ON MUTE?**

## **NEW ENHANCED AI AND BI SOLUTIONS**

LoadSpring now works with provider Google Cloud and services firm SADA to help clients to expand their cloud, BI, and AI/ML capabilities. We combine our application, support, and project expertise with SADA's delivery expertise and Google Cloud infrastructure, solutions, and capabilities in AI and ML. Our managed services and cloud support help clients achieve better project results through lower risks and faster business and project decisions, getting you to project intelligence faster.

LOADSPRING



Google Cloud

SADA™





## IS YOUR BUSINESS INTELLIGENCE ON MUTE?

### CONCLUSION

Which cloud business intelligence software is right for your business to complete this mission and provide you with the project intelligence you need to improve ROI? Find out how you can unmute your project data for valuable business insights and information with the right cloud-managed services partner. We build the data lakes and ponds. You connect to and visualize the data using the unified, scalable LoadSpring Cloud Platform for self-service and project intelligence that's easy to use and helps you gain deeper data insight. Visit [Hosted Cloud-Based BI \(Business Intelligence\) Solutions | LoadSpring](https://www.loadspring.com/hosted-software/hosted-software-business-intelligence/) <https://www.loadspring.com/hosted-software/hosted-software-business-intelligence/> and remember to subscribe to the [LoadSpring blog](#) and get the latest posts sent to your inbox.

