

LoadSpring^{Insight}™ makes the big picture **BIGGER**

Concise insights help improve every project decision

How can executive leadership and management teams make more timely, better-informed project decisions? With faster, easier access to project data as it unfolds, of course. And yet, trying to get consolidated reports using different systems, clouds, and applications is elusive, to say the least.

Even your best-of-breed Project and Cost Management applications were never designed to give you the 50,000-foot overview you really need, especially if the source information is in multiple applications. Especially getting those critical, yet elusive Earned Value S-Curves. Happily, LoadSpring^{Insight} was born for just this purpose.

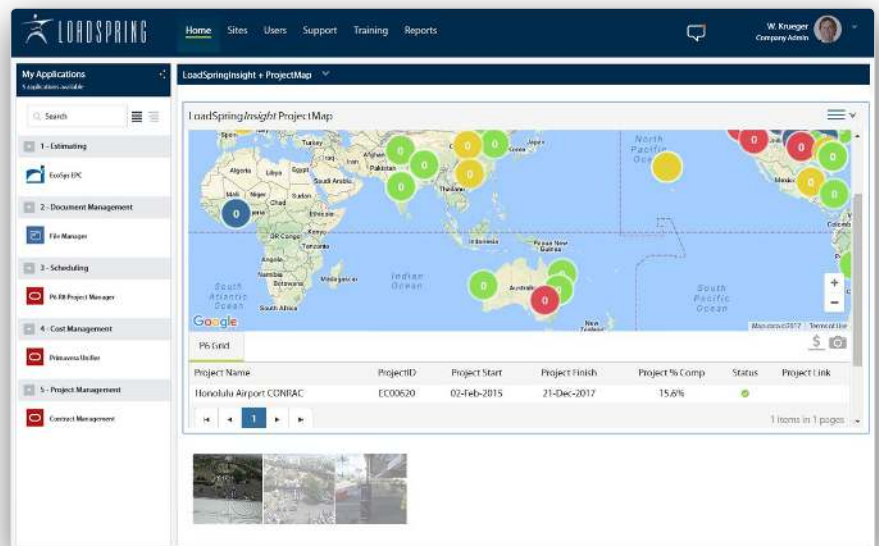
LoadSpring^{Insight} empowers you to access and pick-and-choose the data you want to view simultaneously... even between multiple applications. And it's all done easily and automatically through your familiar LOADSPRING™ Cloud Platform.

Sounds easy because it IS

LoadSpring^{Insight} gives you sharper business insights through an executive-level dashboard that provides cost and schedule status data with full drill-down capability *without being a full-functional user of complex project systems*. We can even integrate applications for you to get the project performance information you need most.

- Now your dashboard can combine and display data from multiple applications the way you want to see it, along with a print and export functionality. In fact, custom intelligent dashboards are a specialty at LOADSPRING.
- Our new project Status Entry capability lets you record status at a narrative level. You can easily capture project performance attributes such as safety metrics and customer satisfaction data—even status overviews—information not natively caught in tools such as Primavera P6/CM/Unifier, Prolog, Ares Prism G2, Deltek PPM Suite or EcoSys.

The result? Smart, real-time business decisions and a huge competitive edge.



Project Intelligence vs. Business Intelligence

Talk about getting your ducks in a row: LoadSpring^{Insight} actually links up to key data sources and unifies everything for a higher level of executive reporting including Earned Value. Furthermore, S-Curve reporting lets you tap into project cost performance data to drive project success. LoadSpring^{Insight} integrates smoothly with your most valuable applications by functionality area:

LoadSpring^{Insight} + Project Management & Scheduling: Displays key project performance data needed to make high-level project decisions. This includes:

- Schedule status (start and finish dates)
- Percentage of completion status
- Red/Yellow/Green status indicators of project performance
- Displays critical information for RFIs, helping to minimize miscommunications and keep a record of all RFI responses
- Tracks project issues that could lead to delays or cost overruns

Plus, LoadSpring^{Insight} easily links to project websites such as SharePoint and many others.

LoadSpring^{Insight} + Cost Management: Shows you business cost performance in a visual “shorthand”. For example:

- Drills into worksheets that contain project cost status information like budgets, actuals and performance indices
- A flexible three-level drill down structure reveals Project Level, Discipline Level, and Cost Code Level
- Reveals budget vs. actuals over time
- Provides far more insight – and more cost data – right down to the control account
- Displays both the schedule performance as well as the cost performance data

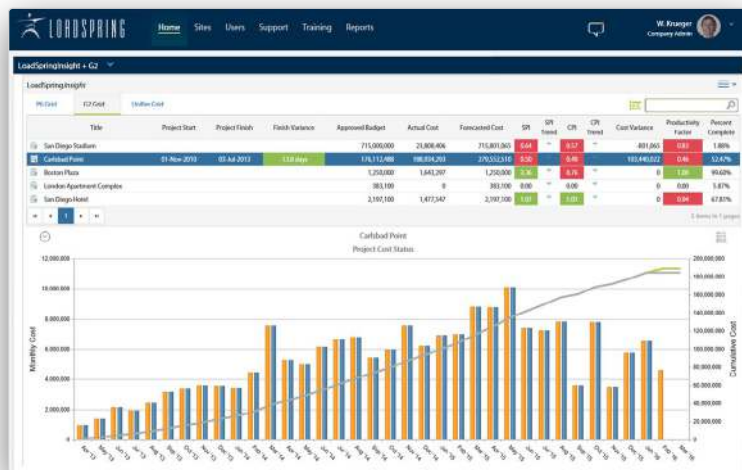
Some of the current connected applications are Oracle Primavera P6/Unifier, Trimble Prolog, EcoSys, Ares Prism G2, and Deltek PPM Suite, and the list keeps growing constantly.

LoadSpring^{Insight} + ProjectMap: Enables geospatial visual reporting of project data from any application connected to LoadSpring^{Insight}. Also, you can upload project photos and status updates to provide visibility for executives and project teams.

The power of perception made easy

LoadSpring^{Insight} opens up your eyes to more vital data from multiple applications, allowing you to make more accurate forecasts, better cost assessments and more precise performance measurements. It’s your shortcut to expanding the Big Picture. And making all your best decisions even better.

For even more information on how LoadSpring^{Insight} can change the way you think and work, contact us at information@loadspring.com.



+1.978.685.9715 www.loadspring.com

The Top 20
Engineering, Design & Construction firms
all use **LOADSPRING***

*Source: 2017 ENR's Top 100 Professional Services Firms
and Top 500 Design Firms + LoadSpring data.
© Copyright 2017. LoadSpring is a trademark of LoadSpring Solutions, Inc.
All Rights Reserved. loadspring.com Follow us on Facebook.