

# SpringBoard<sup>Insight</sup>™ makes the big picture **BIGGER**

## Concise insights help improve every project decision

How can executive leadership and management teams make more timely, better-informed project decisions? With faster, easier access to project data as it unfolds, of course. And yet, trying to get consolidated reports using different systems and applications is elusive, to say the least.

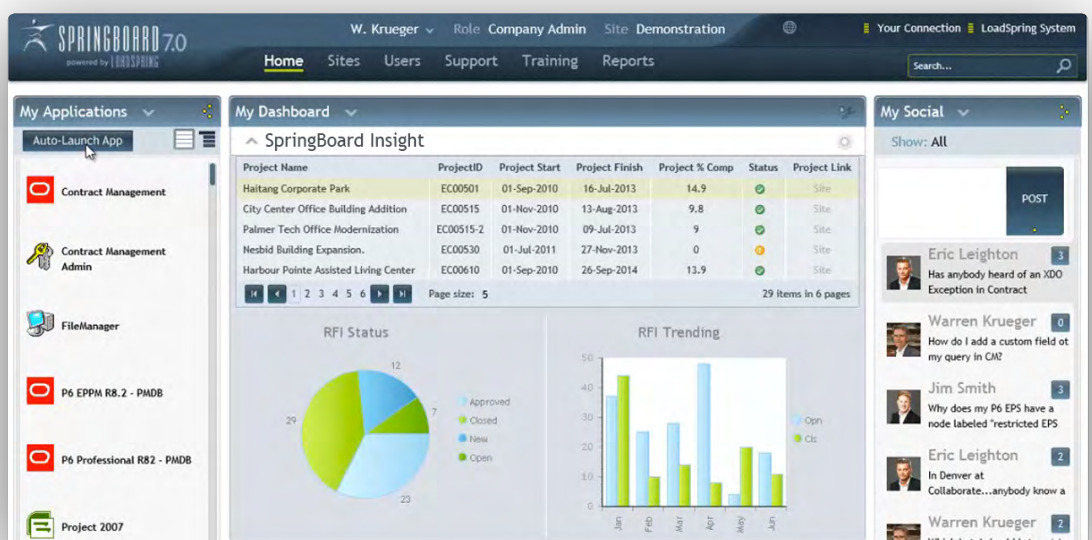
Even your best-of-breed Project Management applications were never designed to give you the 50,000-foot overview you really need, especially if the source information is in multiple applications. Happily, SpringBoard<sup>Insight</sup> was born for just this purpose.

SpringBoard<sup>Insight</sup> empowers you to access and pick-and-choose the data you want to view simultaneously... even between multiple applications. And it's all done simply and easily through your familiar *SpringBoard*™ Cloud portal.

## Sounds easy because it IS

SpringBoard<sup>Insight</sup> gives you sharper business insights through an executive-level dashboard that provides cost status with full drill-down capability... *all without being a full-functional user of complex project cost systems.* We can even integrate applications for you to get the project performance information you need most.

- Now your dashboard can combine and display data the way you want to see it. In fact, custom intelligent dashboards are a specialty at LOADSPRING™.
- Our new project Status Entry capability lets you record status at a narrative level. You can easily capture project performance attributes such as safety metrics and customer satisfaction data—even status overviews—all the information not natively caught in Primavera P6/CM or Ares Prism G2.
- The result? Smart, real-time business decisions and a huge competitive edge.



## Project Intelligence vs. Business Intelligence

Talk about getting your ducks in a row: SpringBoard*Insight* actually links up to key data sources and unifies everything for a higher level of executive reporting. It integrates smoothly with your most valuable applications:

### SpringBoard*Insight* + PRIMAVERA P6

Displays the key project performance data you need in order to make high-level project decisions. This includes:

- Schedule status (start and finish dates)
- Completion percentage status
- Red/Yellow/Green status indicators of project performance

Plus, SpringBoard*Insight* easily links to project websites such as SharePoint and many others.

### SpringBoard*Insight* + PRIMAVERA CM

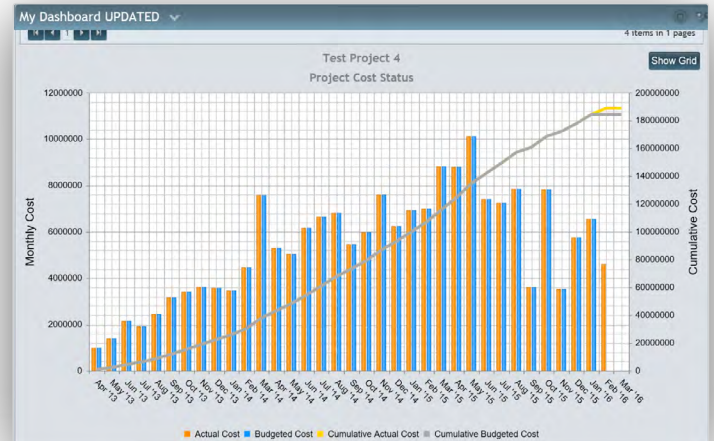
Shows you business process performance in a quick-reading visual “shorthand.” For example:

- Displays at-a-glance information for RFIs, helping to minimize miscommunications and keep a tidy record of all responses
- Tracks project issues that could lead to delays or nasty cost overruns
- Drills into worksheets that contain project cost status information, such as budgets, RFPs and selected vendors
- A flexible three-level drill down structure reveals Project Level, Discipline Level, and Cost Code Level

### SpringBoard*Insight* + ARES PRISM G2

Lets you tap into project cost data and drill into cost codes with ease and confidence.

- Works with G2 to plot cost performance via a handy grid and S Curve
- Reveals budget vs. actuals over the course of time
- Provides far more insight—and more cost data—right down to the control account



## The power of perception made easy

SpringBoard*Insight* opens up your eyes to more vital data from multiple applications, allowing you to make more accurate forecasts, better cost assessments and more precise performance measurements. It’s your shortcut to expanding the Big Picture. And making all your best decisions even better.

For even more information on how SpringBoard*Insight* can change the way you think and work, contact us at [information@loadspring.com](mailto:information@loadspring.com)



+1.978.685.9715 [www.loadspring.com](http://www.loadspring.com)

**America's Top 20**  
*Engineering, Design & Construction firms*  
all use **LOADSPRING\***

\*Source: 2016 ENR's Top 100 Professional Services Firms and Top 500 Design Firms + LoadSpring data.  
© Copyright 2016. LoadSpring is a trademark of LoadSpring Solutions, Inc. All Rights Reserved. [loadspring.com](http://loadspring.com) Follow us on Facebook.